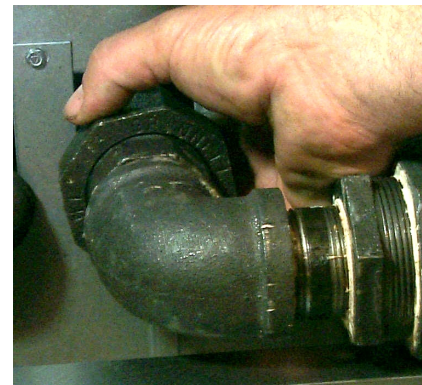
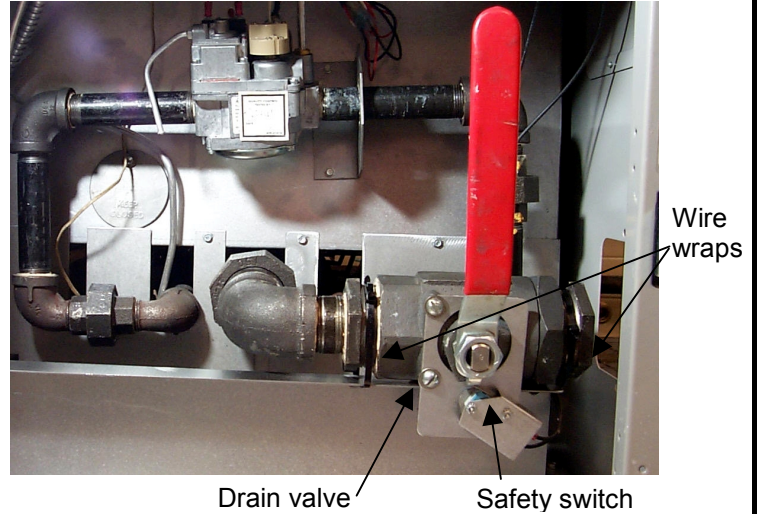


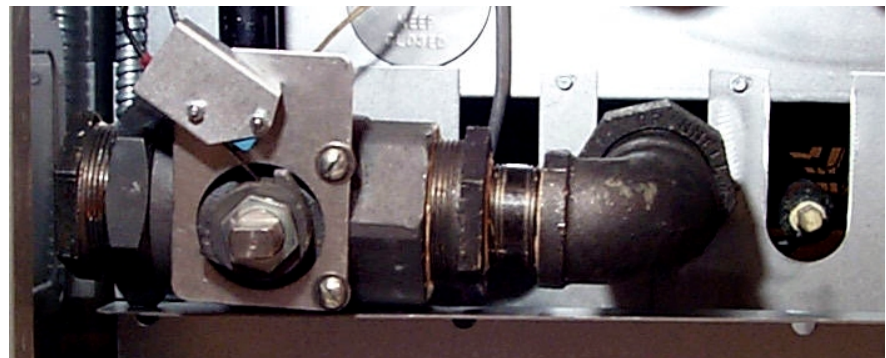
Drain Valve Exit Adjustment

The path of the drain on the KJ3/MJCFF fryer can easily be changed by following these steps:

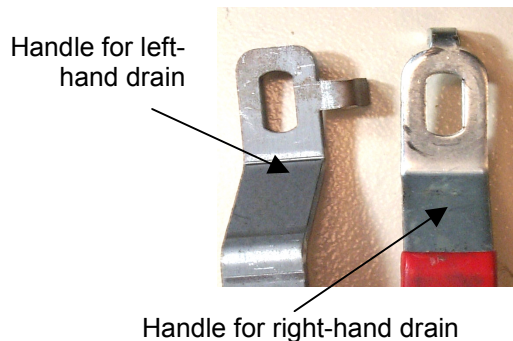
- Drain shortening.
- Remove power from unit and ensure fryer has cooled.
- Remove drain extension.
- Remove handle.
- Cut wire ties connecting the drain valve safety switch wires to the body of the drain valve.
- Loosen the collar on the drain valve assembly where it exits the frypot.
- Rotate valve assembly 180 degrees to opposite side of the cabinet, guiding the wires to the drain valve safety switch as you proceed.
- Remove plate covering exit port on fryer cabinet and install on opposite side.
- Install new handle. See picture to distinguish left and right-hand handles.
- Ensure tab of safety switch rests on top of flange on drain handle.
- Reinstall drain extension.
- Tighten all connections and return fryer to operation.



Loosening collar at frypot allows rotation of the assembly.



Drain assembly redirected 180-degrees. Note safety switch on top of valve.



The tab on the drain-valve safety switch should rest on the flange of the new drain handle.

